



## International Cricket Ground - Feasibility Study

Presented to  
**City of Cupertino**  
Recreation &  
Community Services  
December 20, 2017

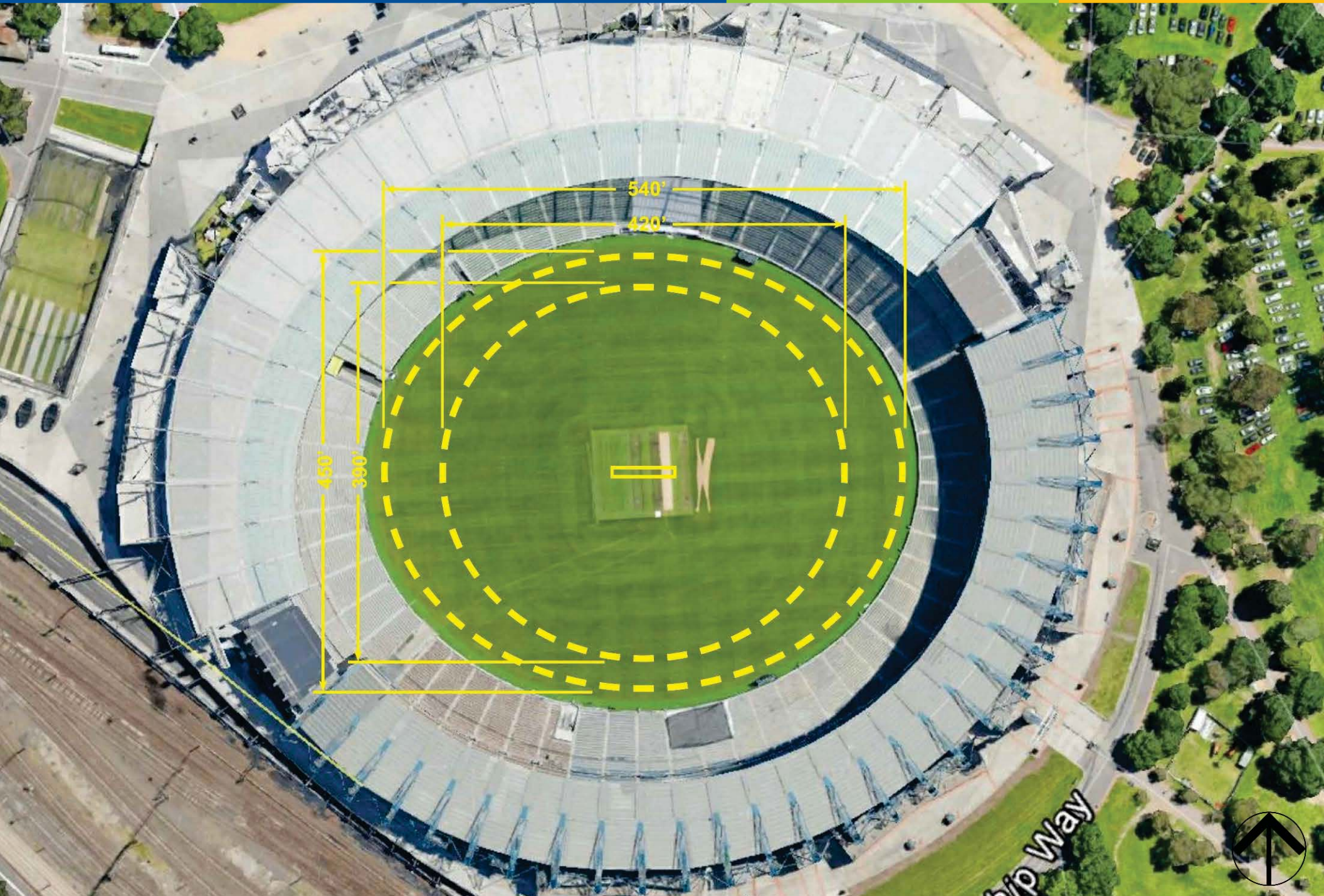


# Project Purpose

- Identify required playing area, supporting facilities, spectator seating and accessibility to support International Cricket facility
- Identify from City's inventory of parks and schools the most suitable site(s), if any
- Identify existing uses that would be displaced

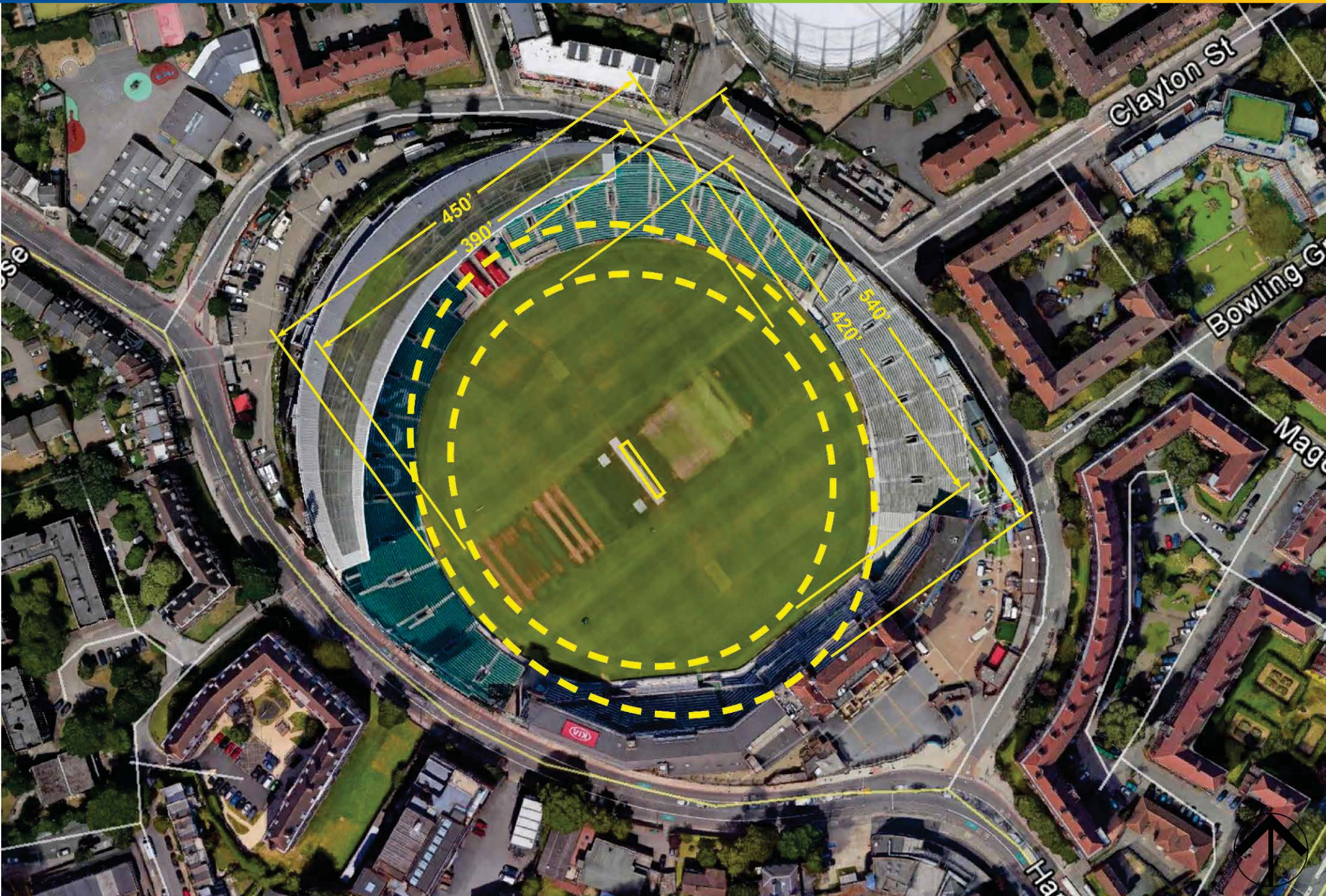
# Melbourne Cricket Ground

Melbourne, Victoria, Australia



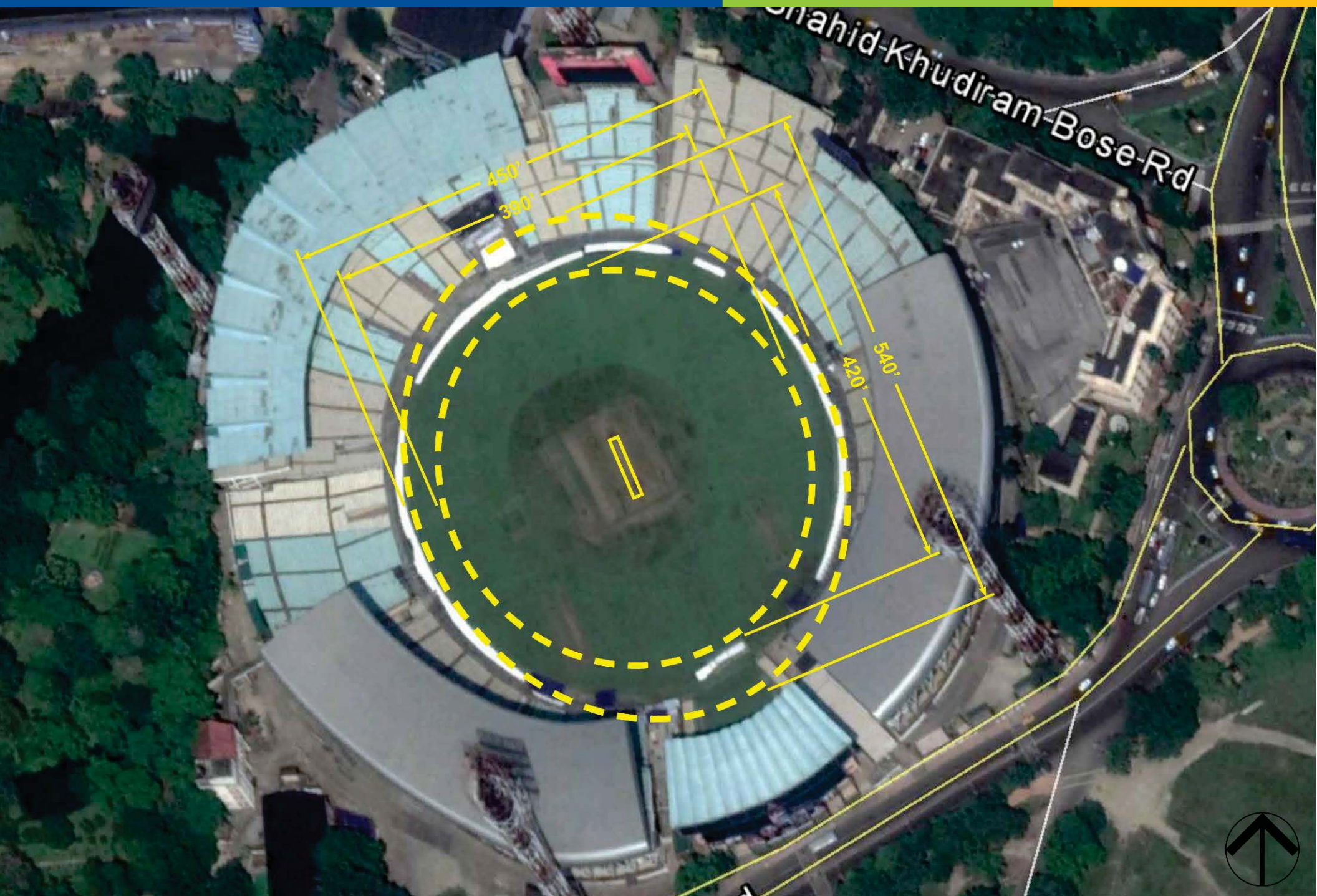
# The Oval

Kennington, London, United Kingdom



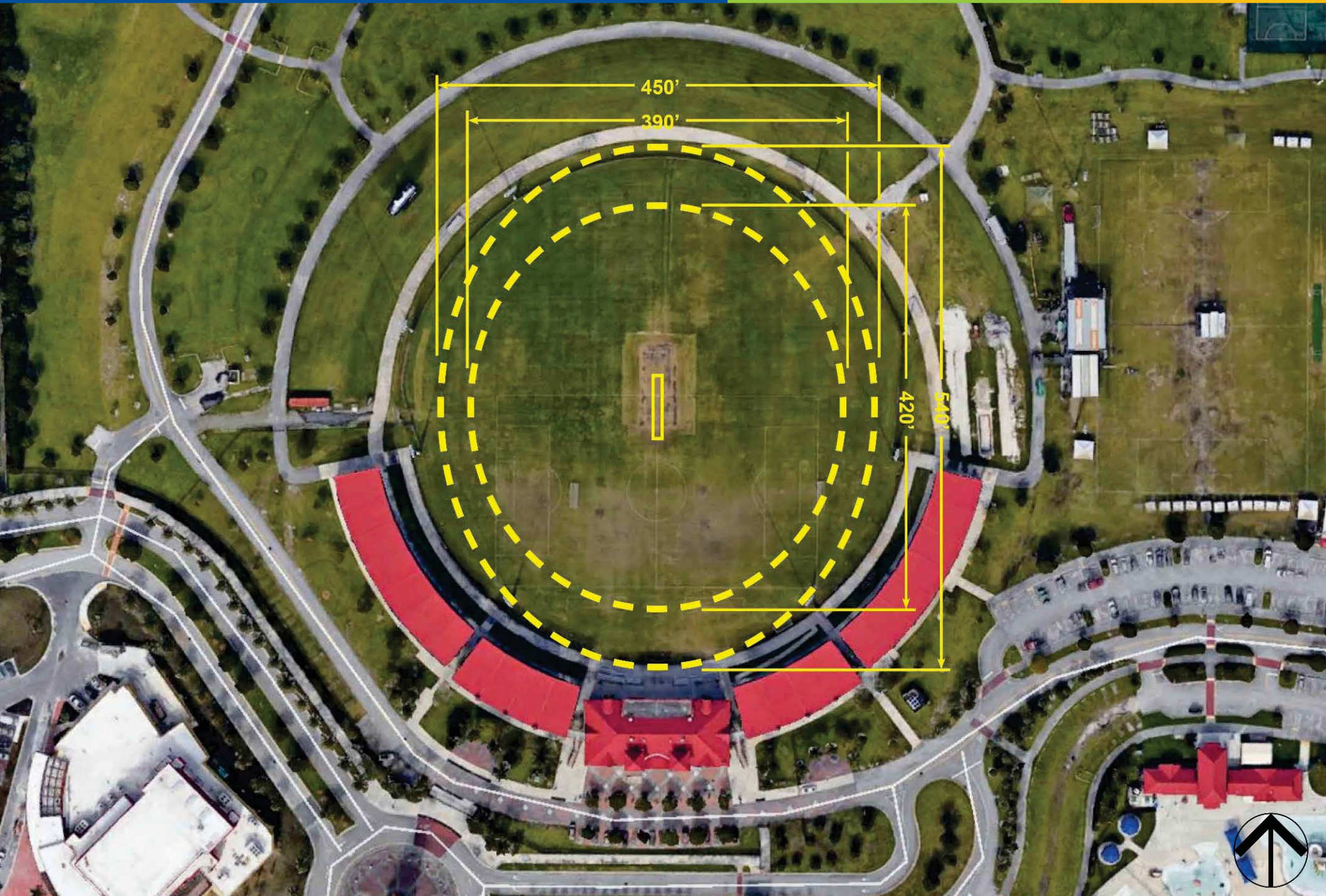
# Eden Gardens

Kolkata, West Bengal, India



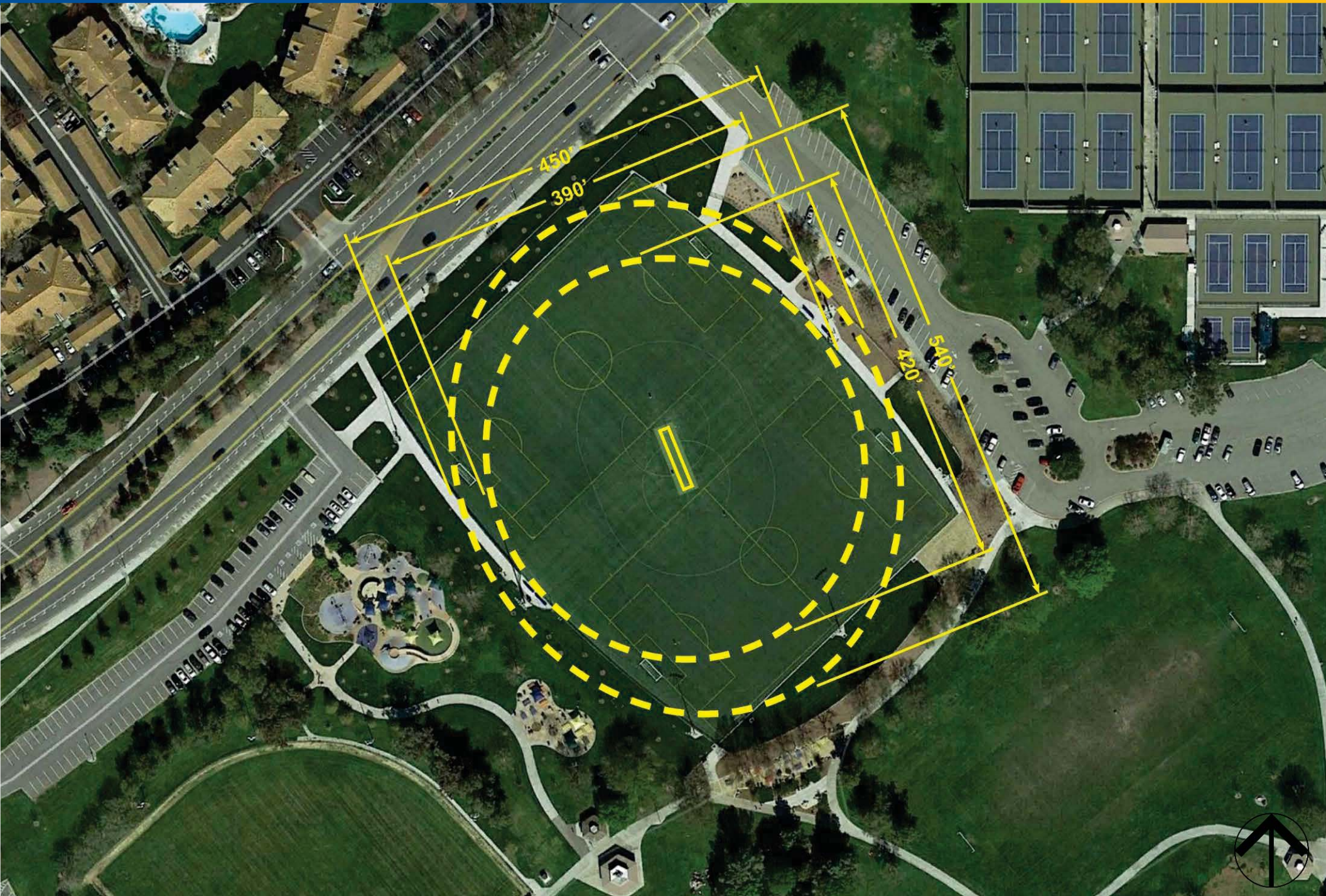
# Central Broward Regional Park

Lauderhill, Florida



# Fremont Cricket/Soccer Fields

Fremont, CA



# CREEKSIDE PARK

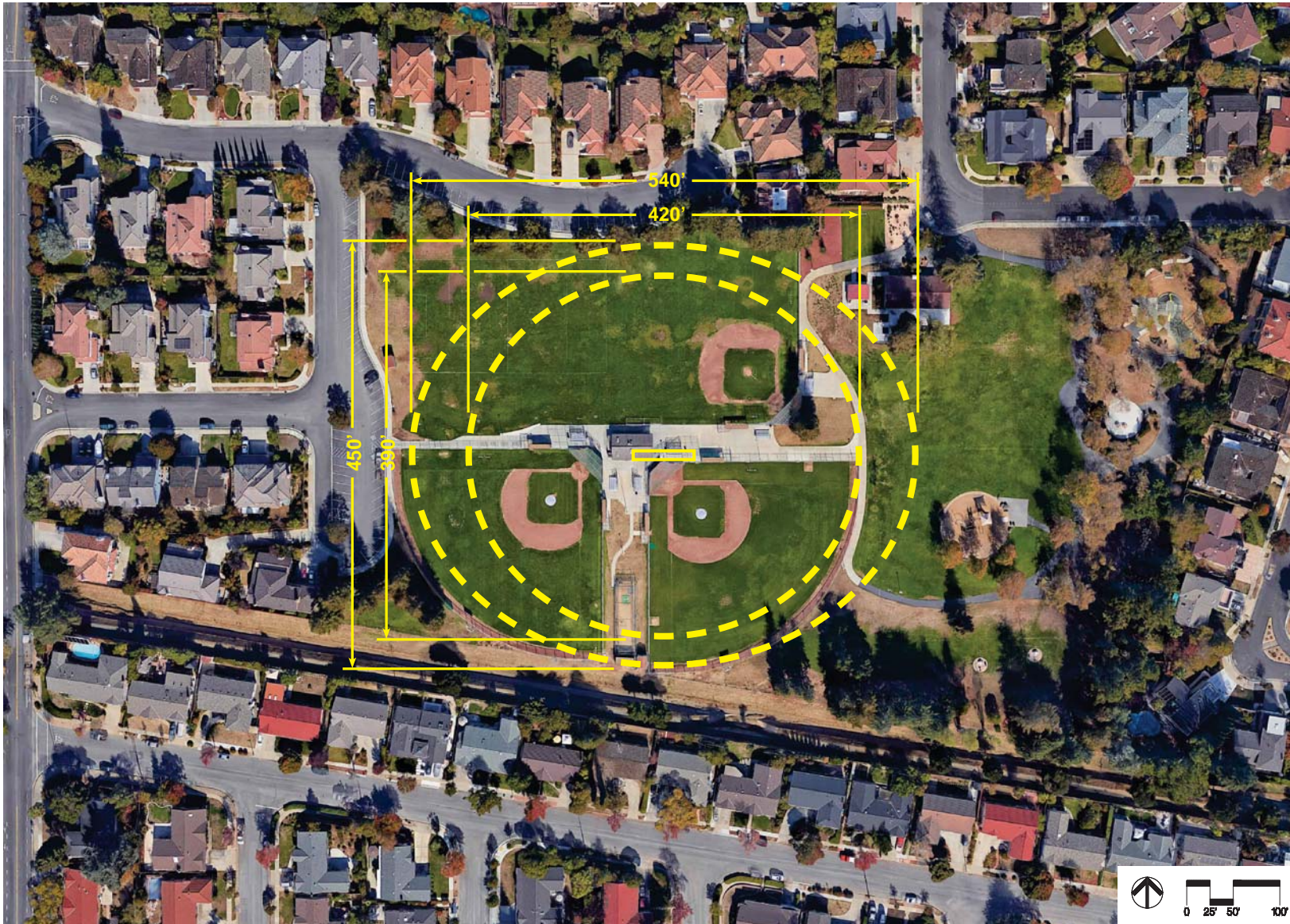




# JOLLYMAN PARK



# WILSON PARK



# CREEKSIDE PARK

## DISPLACED USES

- PARKING AND CIRCULATION
- PLAYGROUND
- BASKETBALL COURT
- SOCCER FIELD

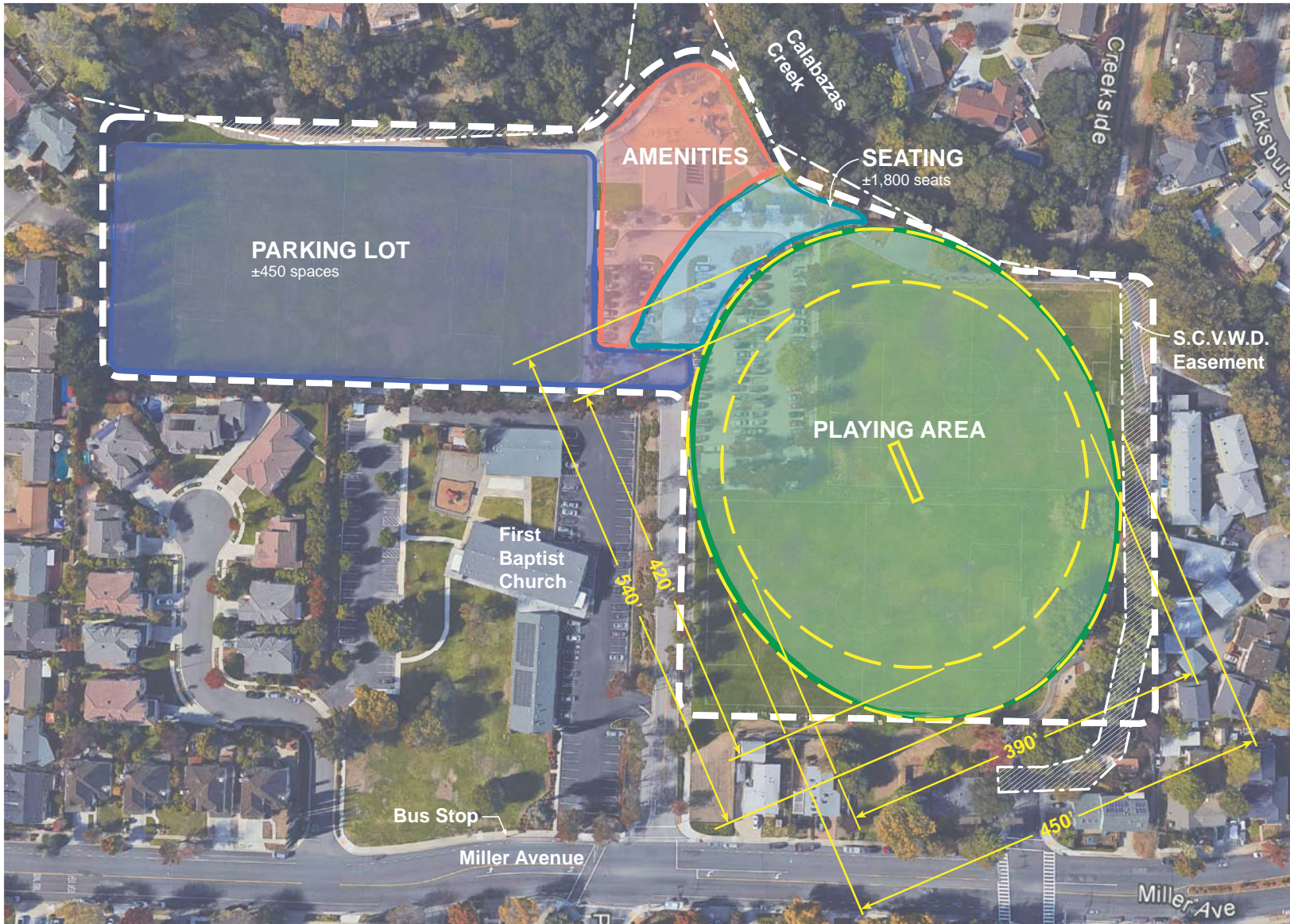
## PROS

- FULL SIZE FIELD POSSIBLE
- EDGE BARRIER

## CONS

- RESIDENTIAL NEIGHBORHOOD
- NARROW ACCESS DRIVE
- LOSS OF PARK AMENITIES
- LESS THAN IDEAL FIELD ORIENTATION

December 20, 2017



- CRICKET FIELD
- SPECTATOR SEATING
- AMENITIES
- PARKING





# JOLLYMAN PARK

## DISPLACED USES

- PLAY AREAS
- PARKING & CIRCULATION
- BASKETBALL

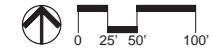
## PROS

- FULL SIZE FIELD POSSIBLE

## CONS

- RESIDENTIAL NEIGHBORHOOD
- LOSS OF PARK AMENITIES
- LESS THAN IDEAL FIELD ORIENTATION
- LOSS OF MATURE TREES

- CRICKET FIELD
- SPECTATOR SEATING
- AMENITIES
- PARKING



# WILSON PARK

## DISPLACED USES

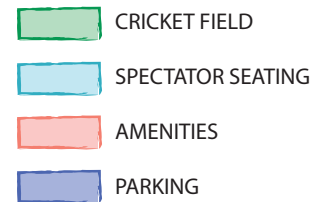
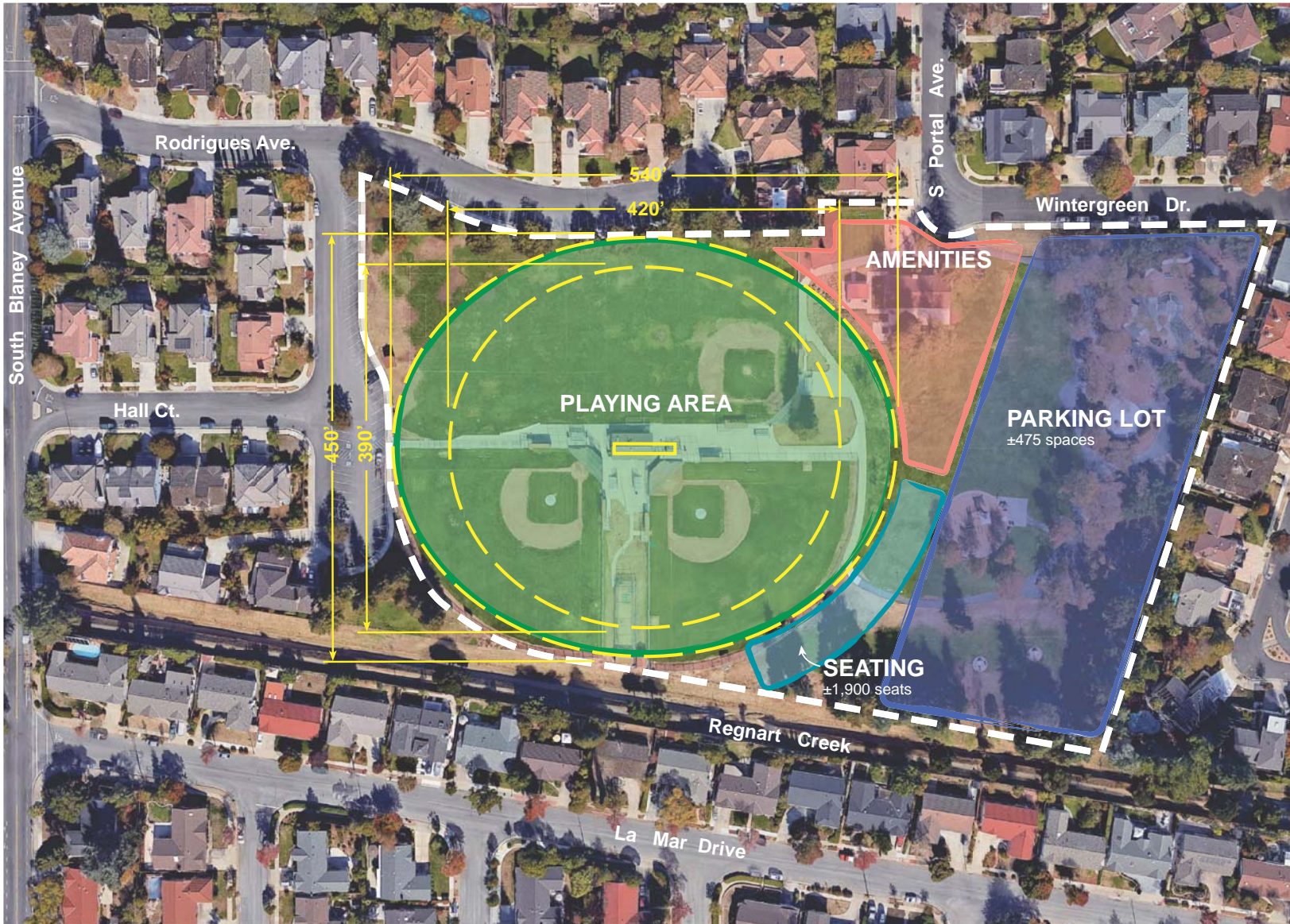
- BASEBALL FIELDS
- RESTROOM/CONCESSION
- PARK CIRCULATION
- PLAY AREAS

## PROS

- FULL SIZE FIELD POSSIBLE

## CONS

- LESS THAN IDEAL FIELD ORIENTATION
- TRAFFIC VOLUME IN NEIGHBORHOOD
- RESIDENTIAL NEIGHBORHOOD
- LOSS OF PARK AMENITIES



## Cricket Feasibility Study - Sites Comparison Matrix

	Creekside Park	Wilson Park	Jollyman Park
Criteria			
Full Size Field?	Yes	Yes	Yes
Spectator Capacity	<2,000	<2,000	<2,000
Parking Capacity	<500	<500	<500
Existing Parking Spaces	106	182	76
Distance from Freeway	1 mi from HWY 280	1 mi from HWY 280	1.2 mi from HWY 85
Distance to Bus Route	0.1 mile	0.5 mile	0.5 mile
Field Orientation	Northeast-Southwest	East-West	Northwest-Southeast
Service Road to Accommodate Traffic	Med	Low	Med
Existing Edge Barrier	Yes	No	No
Adjacent Land Uses	Single Res., Multi Res., Church, Creek	Single Res., Creek	Single Res., Church
Displaced Uses:			
Soccer Field	Yes	No	No
Baseball Field	No	Yes	No
Basketball Court	Yes	No	Yes
Playground	Yes	Yes	Yes
Pathways	Yes	Yes	Yes
Buildings	No	Yes	No

